

AMERICA'S FAVORITE TRUCK CAMPER + NORTH AMERICA'S LARGEST CAMPER MANUFACTURER SINCE 1965



Memories. Tales told 'round the fire. Of people. Places. Things done. A summer's camping. Boating. Fishing the lakes. Those hunting trips. Backcountry horse rides. Four-wheeling the dunes. Winter's sports. Visiting friends in the country. Whatever your outdoor passions, a Lance camper can make memories that last lifetimes.



INTERIOR PHOTOS

Lance 1181	4-5	Lance 845	14-15
Lance 1131	6-7	Lance 835	16-17
Lance 1055	8-9	Lance 805	18-19
Lance 950	10-11		
Lance 851	12-13		

INTERIOR DECOR

Copper Canyon	17
Mineral Wash	13
Ponderosa	7, 15
Waterfall	5, 9, 11

SPECS

Lance 805	20	Lance 861	13	Lance 1131	25
Lance 815	20	Lance 915	23	Lance 1181	25
Lance 835	22	Lance 950	23	Lance 1191	26
Lance 845	21	Lance 981	24		
Lance 851	17	Lance 1055	24		



If you're in the market for an RV – and you're trying to decide among motorized, towable, or truck camper – here are some very practical considerations: **Purchase price far less than a motorhome. Lower total cost of ownership (versus other RV's fuel, storage, registration, engine and transmission repairs, tires, insurance and depreciation). No storage costs – store at your house. Tow all your toys – boats, horse, cargo, motorcycle, snowmobile trailers. Ease in getting around. Highly maneuverable. Go anywhere a truck goes. Not limited to RV campsites. Better fuel economy. Less warranty and service issues. Easier to find techs and parts to work on a pickup truck than a motorhome chassis. Comfort behind the wheel. No need to get used to a new vehicle. No trouble backing-up. The most versatile RV. 3-in-1 combination: vehicle, camper, trailer.**



little things

We use costly stainless steel and coated Everlube®

fasteners on our exteriors to help prevent corrosion – important in maintaining the like-new appearance and value of your camper investment. A small example of how little things make a big difference – and the careful attention to detail we invest in engineering quality products for you.



Lance 1181

Top-of-the-line. A fabulously large dry bath, roll-out pantry and drawers, lots of counter space – and a full-wall slideout with double-door refrigerator, dinette and wardrobe. A huge insulated skylight and mirrored wardrobe complete the picture.







Lance 1131

If you need the extra room for sleeping, the Lance 1131 is the floorplan for you. New for 2007, the 1131 is Lance's most spacious truck camper ever – sleeping up to seven – with plenty of room in the cabover, dinette, bunk and rear tent bed areas. Everything you need for those weekends with the kids and all the toys.





6 major ways Lance is Number 1



BEST CAMPER DESIGN + ENGINEERING

No other camper manufacturer can match our 42 years' expertise and investment of capital in personnel, equipment, materials and technologies.



BEST CAMPER CONSTRUCTION

Compare for yourself. Once you step in a Lance, you'll sense the difference. We're the innovators of LanceLock™ – the *only* system that *properly* and *securely* integrates aluminum-tubed framing together.

BEST IN OWNER SATISFACTION

We believe in treating people fairly and we strive to do what's right. We're grateful to our many loyal Lance owners since 1965.



BEST REPUTATION FOR QUALITY

Lance has received the prestigious DSI (Dealer Satisfaction Index) Quality Circle Award eight times. Only a handful of RV manufacturers make the grade.

BEST FACILITIES

141,000 square feet on a 22-acre campus.



BEST DEALER NETWORK

Dealers across the US and Canada – ready to serve you.



Perfect for people that prefer a non-slideout camper with larger floorspace, the Lance 1055 is a 10'11" camper with an oversized dry bath. Also, a food bar and abundant counter space not found in today's campers – until now. The 1055's basement design offers increased storage and holding tank capacities as well.

Lance 1055





Waterfall interior with optional fold-down sofa/bed

living the
Lance
life

**Bill
Huber**



Looking for a top-quality truck camper, but without a slide? The Lance 950 features a full basement for extra storage and tank capacities – and is forged from 42 years' experience by the best in the industry. Better built. 100% made-in-USA. Lance.

**Lance
950**

PRCA Calf Roping Champion Bill Huber, wife Jackie, sons Justin and Cody (and several horses in-tow) have been living the Lance life for years – traveling over 250,000 miles to rodeos in their Lance.



"If that's not a testimonial as to Lance's quality and durability, well then, I don't know what is" says Bill. "And it's very comfortable and convenient to travel in, too" adds Jackie. "We love our Lance!"





matching your truck + camper

Truck manufacturers provide consumers with certain ratings to help determine the capacities of the truck, as manufactured. Some of those ratings are posted on the door jam, a label in the glove box, or in the owner's manual.

If you already own a truck that you intend to use for a camper, it's always wise to take it to a commercial truck scale to determine the actual weight of the truck. That information – along with your truck capacity information – will help determine the remaining capacities for carrying and/or towing.

Camper weights – both dry and wet – vary depending on what optional equipment you've installed and how full your holding tanks are. Also take into consideration the weight of gear, passengers and trailer tongue (if applicable).

Truck and camper package handling can be greatly improved by the addition of support equipment like air bags, special truck shocks, and cabover shocks – outlined on page 30. Maintaining maximum tire pressure on quality tires with ratings equal to, or better than, your original tires is also important.

Because we're unfamiliar with your specific truck and how you intend to use it, Lance makes no warranties or representation – express or implied – as to the performance or reliability of your truck with a Lance camper.

For professional guidance, see your nearest Factory Authorized Lance Dealer. They're trained in properly calculating truck/camper packages.



Identical to the Lance 861's floorplan, the Lance 851 is the long bed version – suited for three-quarter-ton trucks. With a basement design providing generous storage and extra tank capacities, the 851 is an ideal rig for long bed trucks.

Lance 851





go any where



Tired of rules and road signs that say 'no'? In a Lance, you can laugh them off. Go ahead. Take the roads all those motor-home and towable RVers can't navigate. Go to where the pavement ends and the great outdoor adventures begin – because anywhere a truck can go – you can go, too.



Fact: Lance truck campers are the most maneuverable RVs available.



One of our most popular models, with a built-on bumper and step for easy access into the coach, the Lance 845 is a short bed truck owner's dream. The extended cabover with queen-sized bed is standard on both the Lance 845 and 835. And the front cabinets in the cabover bedroom area provide extra storage.

Lance 845





designed + built to last

On average, hundreds of man-hours and over 1700 components (many of them custom) go into building each Lance camper. We care about the quality of our products and invest the extra time, energy and engineering to ensure we consistently produce the best truck campers anywhere.

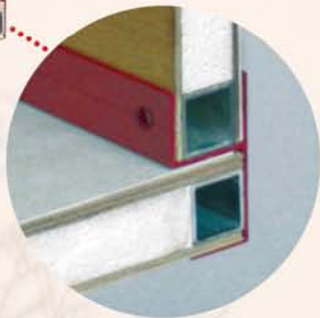
LanceLock™

Lance-proprietary structural assembly process

Introduced in 2005 models, LanceLock is the method Lance uses to integrate their .060-aluminum-tubed frames together.



The reason it's called "LanceLock" is because of the specially made, interlocking aluminum extrusions (shown in red) – a Lance exclusive – delivering incredible strength and durability.



Our aluminum structural framing uses thicker, aircraft-grade .060-inch Alodine®-coated metal – welded within a precision jig system to ensure true-to-square, tight-tolerance assembly.



.060" aluminum

Factory tours are available on a limited, advance-reservation basis. Please call 661 949 3322 x319 for details.



Because of no overhang with the Lance 835, you can tow a large load without a hitch box extension. And with a dinette that converts into a bed – along with the standard overhead bunk – the 835 can very comfortably sleep five.

TPO roofs

All Lance models are made with seamless, marine-grade TPO (thermo-plastic polyolefin) roofs – a superior material usually reserved for high-line RV products.



Lance 835





camper power

A camper's electrical system is attached to a power panel, which accepts both 12-volt DC and 110-volt AC current. When a camper is plugged into household current (110 volts AC) at a campground, a built-in converter changes AC current to 12 volts DC. Your camper's furnace fan, range hood, water pump and lights are all 12-volt DC appliances.

The power panel also distributes 110-volt power to the refrigerator, microwave and to the 110-volt AC outlets, so you can use virtually any household appliance. It also serves as a charger, keeping the camper battery fully energized for the times you're not plugged into a 110-volt power supply.

When you're on the road, the alternator in the truck can distribute power to both the truck battery and the camper

battery. The camper battery operates all the 12-volt appliances when the camper isn't plugged into a 110-volt source.

In many models, a propane-powered generator may be ordered. Just push the button and, in a few seconds, you'll have power to operate your microwave, air conditioner, or almost any other 110-volt AC appliance – plus power for the camper's built-in charging system.

Propane is the fuel that powers the range/oven, furnace, water heater, and, if installed, the generator. Refrigerators can be powered three ways – 12-volt DC, 110-volt AC, and propane.

Because your optional dealer-installed camper battery can be wired to the truck alternator, it will recharge while driving the truck. However, unless you're on-the-move (and that's not always practical) – **solar energy is a terrific way to keep your battery charged. With an optional 80-watt-output solar panel with built-in regulator, recharging your battery is silent, automatic and very practical.**

Lance factory-installed panels have a red LED indicator light conveniently located, indicating when the solar panel is producing power.

Solar panels are very useful in colder climates, where the furnace fan can draw down a battery in 24 to 48 hours.

Your Factory Authorized Lance Dealer can answer any technical questions you may have about power in a Lance camper that's not covered in this overview.



Optional
solar panel

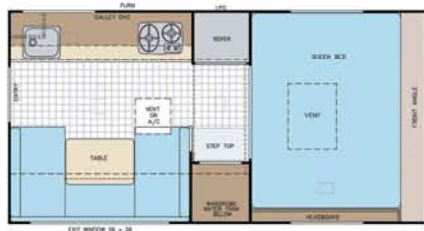
Lance 805

The 805 is our smallest and lightest camper – designed especially for half-ton and import trucks. The floorplan is clean and simple. And with a light weight and light price, this rig is perfect for those quick, get-away weekends.





Lance 805



8'0" narrow-body non-self-contained camper designed for domestic F-150s and 1500s – and import trucks with a minimum width of 48" between wheel wells

Interior floor length 8'0"

Interior height 6'6"

Cabover interior headroom 33"*

Truck bed height 82.25"*

Exterior width 86"

Overall exterior height 89.25"*

Fresh water tank 16 gallons

Grey water tank N/A

Black water tank N/A

Propane 1 five-gallon tank

Refrigerator 3 cubic feet –
two-way power mode

Furnace 12,000 BTUs

Generator N/A

Shower/toilet N/A

Queen cabover + dinette beds
Standard

Fold-down bunk bed Optional

Non-extended cabover only

Exterior length 14'0"

Center of gravity

68" long bed

50" short bed

Dry weight 1220 pounds*

Available options

- Battery compartment
- Ball screw jacks
- TV antenna
- Fan-Tastic® roof vent
- Air conditioner - Coleman® 13,500-BTU Power Saver with ceiling control
- Awning 7'4" rollout
- Entry step - aluminum four-step scissor
- Bunk bed with child restraint

Lance 815



8'6" narrow-body wet bath camper for single rear-wheel long bed trucks – or for short beds with optional modification

Interior floor length 8'6"

Interior height 6'6"

Cabover interior headroom 32.5"*

Truck bed height 89.25"*

Exterior width 86"

Overall exterior height 96.25"*

Fresh water tank 18 gallons

Grey water tank 11 gallons

Black water tank 10 gallons
(shower waste drains into this tank)

Propane 1 five-gallon tank

Refrigerator 3 cubic feet –
three-way power mode

Furnace 18,000 BTUs

Generator N/A

Shower/toilet Wet

Queen cabover + dinette beds
Standard

Fold-down bunk bed Optional

Extended cabover

Exterior length 16'5"

Center of gravity

68" long bed

50" short bed

Dry weight 1775 pounds*

Non-extended cabover

Exterior length 15'5"

Center of gravity

67" long bed

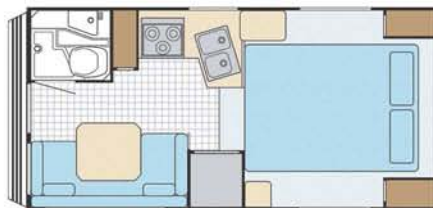
49" short bed

Dry weight 1678 pounds*

Available options

- Interior blue decor palette - Waterfall
- Interior green decor palette - Mineral Wash
- Interior rust decor palette - Copper Canyon
- Interior ebony decor palette - Ponderosa
- Fiberglass walls
- Removable carpet kit
- Extended cabover queen bed
- Extended cabover twin beds
- Three-burner high-output range with oven and cover
- Microwave oven
- Water heater - propane/electric/DSI (direct spark ignition)
- Solar panel
- Ball screw jacks
- Electric jacks with wireless remote
- AM/FM/CD stereo with speakers
- AM/FM/CD/DVD with 15-inch LCD TV and speakers
- Stereo ready/speakers and antenna
- TV antenna
- Satellite dish with TV antenna
- Fan-Tastic® roof vent
- Air conditioner - Coleman® 13,500-BTU Power Saver with ceiling control
- Awning 8' rollout
- Entry step - aluminum four-step scissor
- License plate holder/light
- Roof rack system
- Storage pod
- Removable thermal sash windows (storm windows)
- Folding bunk bed
- Cargo net
- Child restraint with bunk pad
- Shortbed modification
- Portable BBQ

Lance 845



8'6" wet bath short bed camper with generator capability

Interior floor length 8'6"
Interior height 6'8"
Cabover interior headroom 34"*
Truck bed height 90.5"*
Exterior width 93"
Overall exterior height 102.5"*
Fresh water tank 30 gallons
Grey water tank 13 gallons
Black water tank 19 gallons
Propane 2 five-gallon tanks
Refrigerator 4 cubic feet – three-way power mode
Furnace 18,000 BTUs
Generator Optional
Shower/toilet Wet
Queen cabover + dinette beds Standard
Fold-down bunk bed Standard

Extended cabover only

Exterior length 16'5"
Center of gravity 47"
Dry weight 2368 pounds*

Available options

- Interior blue decor palette - Waterfall
- Interior green decor palette - Mineral Wash
- Interior rust decor palette - Copper Canyon
- Interior ebony decor palette - Ponderosa
- Fiberglass walls
- Removable carpet kit
- Extended cabover twin beds
- Microwave oven
- Water heater - propane/electric/DSI (direct spark ignition)
- Generator
- Solar panel
- Electric jacks with wireless remote
- Swingout jack brackets
- AM/FM/CD stereo with speakers
- AM/FM/CD/DVD with 15-inch LCD TV and speakers
- Stereo ready/speakers and antenna
- Satellite dish with TV antenna
- Fan-Tastic® roof vent
- Air conditioner - Coleman® 13,500-BTU Power Saver with ceiling control
- Awning rear door - rollout
- Awning 8' rollout
- Roof rack system
- Storage pod
- Removable thermal sash windows (storm windows)
- Cargo net
- Child restraint with bunk pad
- Portable BBQ

Lance 861



8'8" wet bath short bed camper with generator capability and basement design – with dinette in curbside slideout

Interior floor length 8'8"
Interior height 6'8"
Cabover interior headroom 44.5"*
Truck bed height 101.75"*
Exterior width 96"
Overall exterior height 112.75"*
Fresh water tank 30 gallons
Grey water tank 30 gallons
Black water tank 33 gallons
Propane 2 five-gallon tanks
Refrigerator 6 cubic feet – three-way power mode
Furnace 20,000 BTUs
Generator Optional
Shower/toilet Wet
Queen cabover + dinette beds Standard
Fold-down bunk bed Optional

Extended cabover only

Exterior length 16'9"
Center of gravity 43"
Dry weight 3118 pounds*

Available options

- Interior blue decor palette - Waterfall
- Interior green decor palette - Mineral Wash
- Interior rust decor palette - Copper Canyon
- Interior ebony decor palette - Ponderosa
- Removable carpet kit
- Extended cabover twin beds
- Water heater - propane/electric/DSI (direct spark ignition)
- Generator
- Solar panel
- Backup camera
- Swingout jack brackets
- AM/FM/CD/DVD with 15-inch LCD TV and speakers
- Satellite dish with TV antenna
- Air conditioner - Coleman® 13,500-BTU Power Saver with ceiling control
- Awning rear door - rollout
- Roof rack system
- Storage pod
- Removable thermal sash windows (storm windows)
- Bunk bed with child restraint
- Portable BBQ

Cabover interior headroom heights measured from cabover floor (without mattress) to highest point in cabover ceiling.

Truck bed heights measured from camper's truck bed plate to roof (without air conditioning unit, satellite TV antenna or roof storage system) – including the seven inches for the top of roof ladder.

Overall exterior heights measured from camper's retracted legs to roof (without air conditioning unit, satellite TV antenna or roof storage system) – including the seven inches for the top of roof ladder.

Dry weights based upon standard model features – not including options or dealer-installed items.

Lance 835



8'6" wet bath long bed camper

Interior floor length 8'6"
Interior height 6'8"
Cabover interior headroom 34"*
Truck bed height 90.5"*
Exterior width 93"
Overall exterior height 102.5"*
Fresh water tank 30 gallons
Grey water tank 8 gallons
Black water tank 8 gallons
Propane 2 five-gallon tanks
Refrigerator 4 cubic feet –
 three-way power mode
Furnace 18,000 BTUs
Generator N/A
Shower/toilet Wet
Queen cabover + dinette beds
 Standard
Fold-down bunk bed Standard

Extended cabover only

Exterior length 16'5"
Center of gravity 68"
Dry weight 2114 pounds*

Available options

- Interior blue decor palette - Waterfall
- Interior green decor palette - Mineral Wash
- Interior rust decor palette - Copper Canyon
- Interior ebony decor palette - Ponderosa
- Fiberglass walls
- Removable carpet kit
- Extended cabover twin beds
- Microwave oven
- Water heater - propane/electric/DSI (direct spark ignition)
- Solar panel
- Electric jacks with wireless remote
- Swingout jack brackets
- AM/FM/CD stereo with speakers
- AM/FM/CD/DVD with 15-inch LCD TV and speakers
- Stereo ready/speakers and antenna
- Satellite dish with TV antenna
- Fan-Tastic® roof vent
- Air conditioner - Coleman® 13,500-BTU Power Saver with ceiling control
- Awning rear door - rollout
- Awning 8' rollout
- Entry step - aluminum four-step scissor
- License plate holder/light
- Roof rack system
- Storage pod
- Removable thermal sash windows (storm windows)
- Cargo net
- Child restraint with bunk pad
- Portable BBQ

Lance 851



8'8" wet bath camper with basement and dinette in curbside slideout – identical floorplan to 861, but long bed

Interior floor length 8'8"
Interior height 6'8"
Cabover interior headroom 44.5"*
Truck bed height 101.75"*
Exterior width 96"
Overall exterior height 112.75"*
Fresh water tank 30 gallons
Grey water tank 30 gallons
Black water tank 33 gallons
Propane 2 five-gallon tanks
Refrigerator 6 cubic feet –
 three-way power mode
Furnace 20,000 BTUs
Generator N/A
Shower/toilet Wet
Queen cabover + dinette beds
 Standard
Fold-down bunk bed Optional

Extended cabover only

Exterior length 16'9"
Center of gravity 61"
Dry weight 3068 pounds*

Available options

- Interior blue decor palette - Waterfall
- Interior green decor palette - Mineral Wash
- Interior rust decor palette - Copper Canyon
- Interior ebony decor palette - Ponderosa
- Removable carpet kit
- Extended cabover twin beds
- Water heater - propane/electric/DSI (direct spark ignition)
- Solar panel
- Backup camera
- Swingout jack brackets
- AM/FM/CD/DVD with 15-inch LCD TV and speakers
- Satellite dish with TV antenna
- Air conditioner - Coleman® 13,500-BTU Power Saver with ceiling control
- Awning rear door - rollout
- Roof rack system
- Storage pod
- Removable thermal sash windows (storm windows)
- Bunk bed with child restraint
- Portable BBQ

Cabover interior headroom heights measured from cabover floor (without mattress) to highest point in cabover ceiling.

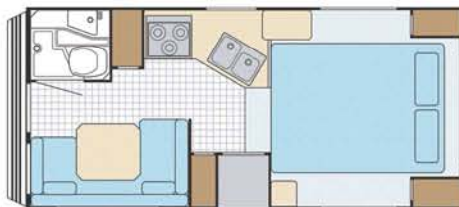
Truck bed heights measured from camper's truck bed plate to roof (without air conditioning unit, satellite TV antenna or roof storage system) – including the seven inches for the top of roof ladder.

Overall exterior heights measured from camper's retracted legs to roof (without air conditioning unit, satellite TV antenna or roof storage system) – including the seven inches for the top of roof ladder.

Dry weights based upon standard model features – not including options or dealer-installed items.



Lance 915



9'6" wet bath camper with generator capability

Interior floor length 9'6"
Interior height 6'10"
Cabover interior headroom 36"*
Truck bed height 92.5"*
Exterior width 93"
Overall exterior height 104.5"*
Fresh water tank 30 gallons
Grey water tank 13 gallons
Black water tank 19 gallons
Propane 2 five-gallon tanks
Refrigerator 5 cubic feet –
 three-way power mode
Furnace 18,000 BTUs
Generator Optional
Shower/toilet Wet
Queen cabover + dinette beds
 Standard
Fold-down bunk bed Standard

Extended cabover only

Exterior length 17'6"
Center of gravity 58"
Dry weight 2439 pounds*

Available options

- Interior blue decor palette - Waterfall
- Interior green decor palette - Mineral Wash
- Interior rust decor palette - Copper Canyon
- Interior ebony decor palette - Ponderosa
- Fiberglass walls
- Removable carpet kit
- Extended cabover twin beds
- Microwave oven
- Water Heater - propane/electric/DSI (direct spark ignition)
- Generator
- Solar panel
- Electric jacks with wireless remote
- Swingout jack brackets
- AM/FM/CD stereo with speakers
- AM/FM/CD/DVD with 15-inch LCD TV and speakers
- Stereo ready/speakers and antenna
- Satellite Dish w/TV Antenna
- Fan-Tastic® roof vent
- Air conditioner - Coleman® 13,500-BTU Power Saver with ceiling control
- Awning rear door - rollout
- Awning 9' rollout
- Roof rack system
- Storage pod
- Removable thermal sash windows (storm windows)
- Cargo net
- Bunk bed with child restraint
- Portable BBQ

Lance 950



9'11" wet bath camper with generator capability and basement design in a non-slideout configuration

Interior floor length 9'11"
Interior height 6'8"
Cabover interior headroom 44.5"*
Truck bed height 101.75"*
Exterior width 96"
Overall exterior height 112.75"*
Fresh water tank 30 gallons
Grey water tank 30 gallons
Black water tank 33 gallons
Propane 2 five-gallon tanks
Refrigerator 6 cubic feet –
 three-way power mode
Furnace 20,000 BTUs
Generator Optional
Shower/toilet Wet
Queen cabover + dinette beds
 Standard
Fold-down bunk bed Optional

Extended cabover only

Exterior length 18'0"
Center of gravity 51"
Dry weight 3040 pounds*

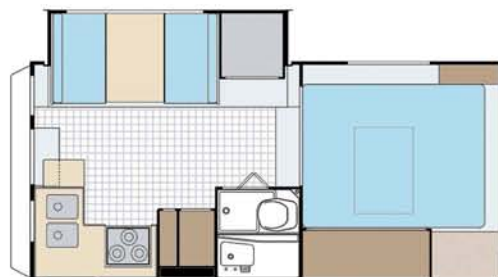
Selected standard features

- Fiberglass exterior
- Electric jacks
- Awning 9' rollout
- Fan-Tastic® roof vent

Available options

- Interior blue decor palette - Waterfall
- Interior green decor palette - Mineral Wash
- Interior rust decor palette - Copper Canyon
- Interior ebony decor palette - Ponderosa
- Removable carpet kit
- Sofa bed - foldover
- Extended cabover twin beds
- Water heater - propane/electric/DSI (direct spark ignition)
- Generator
- Solar panel
- Backup camera
- Swingout jack brackets
- AM/FM/CD/DVD with 15-inch LCD TV and speakers
- Satellite dish with TV antenna
- Air conditioner - Coleman® 13,500-BTU Power Saver with ceiling control
- Awning rear door - rollout
- Roof rack system
- Storage pod
- Removable thermal sash windows (storm windows)
- Cargo net
- Child restraint with bunk pad
- Portable BBQ

Lance 981



9'11" wet bath camper with generator capability – and dinette and refrigerator on roadside full-wall slideout

Interior floor length 9'11"
Interior height 6'8"
Cabover interior headroom 44.5"*
Truck bed height 101.75"*
Exterior width 96"
Overall exterior height 112.75"*
Fresh water tank 35 gallons
Grey water tank 30 gallons
Black water tank 30 gallons
Propane 2 seven-gallon tanks
Refrigerator 6 cubic feet – three-way power mode
Furnace 20,000 BTUs
Generator Optional
Shower/toilet Wet
Queen cabover + dinette beds Standard
Fold-down bunk bed Optional

Extended cabover only

Exterior length 18'0"
Center of gravity 51"
Dry weight 3685 pounds*

Available options

- Interior blue decor palette - Waterfall
- Interior green decor palette - Mineral Wash
- Interior rust decor palette - Copper Canyon
- Interior ebony decor palette - Ponderosa
- Removable carpet kit
- Sofa bed - U-shape
- Extended cabover twin beds
- Water heater - propane/electric/DSI (direct spark ignition)
- Generator
- Solar panel
- Backup camera
- Swingout jack brackets
- AM/FM/CD/DVD with 15-inch LCD TV and speakers
- Satellite dish with TV antenna
- Air conditioner - Coleman® 13,500-BTU Power Saver with ceiling control
- Awning rear door - rollout
- Awning slideout cover
- Roof rack system
- Storage pod
- Removable thermal sash windows (storm windows)
- Bunk bed with child restraint
- Portable BBQ

Lance 1055



10'11" camper with oversized dry bath, food bar, extra counter space, and basement with increased storage/tanks

Interior floor length 10'11"
Interior height 6'8"
Cabover interior headroom 44.5"*
Truck bed height 101.75"*
Exterior width 96"
Overall exterior height 112.75"*
Fresh water tank 30 gallons
Grey water tank 35 gallons
Black water tank 33 gallons
Propane 2 five-gallon tanks
Refrigerator 6 cubic feet – three-way power mode
Furnace 20,000 BTUs
Generator Optional
Shower/toilet Dry
Queen cabover + dinette beds Standard
Fold-down bunk bed Standard

Extended cabover only

Exterior length 19'0"
Center of gravity 50"
Dry weight 2888 pounds*

Available options

- Interior blue decor palette - Waterfall
- Interior green decor palette - Mineral Wash
- Interior rust decor palette - Copper Canyon
- Interior ebony decor palette - Ponderosa
- Fiberglass walls
- Removable carpet kit
- Sofa bed - foldover
- Extended cabover twin beds
- Microwave oven
- Water heater - propane/electric/DSI (direct spark ignition)
- Generator
- Solar panel
- Electric jacks with wireless remote
- Swingout jack brackets
- AM/FM/CD stereo with speakers
- AM/FM/CD/DVD with 15-inch LCD TV and speakers
- Stereo ready/speakers and antenna
- Satellite dish with TV antenna
- Fan-Tastic® roof vent
- Air conditioner - Coleman® 13,500-BTU Power Saver with ceiling control
- Awning rear door - rollout
- Awning 9'4" rollout
- Roof rack system
- Storage pod
- Removable thermal sash windows (storm windows)
- Cargo net
- Child restraint with bunk pad
- Portable BBQ

Lance 1131



11'11" dry bath camper with roadside slideout, side entry and rear tent – capable of sleeping seven

Interior floor length 11' 11"
Interior height 6'8"
Cabover interior headroom 44.5"*
Truck bed height 101.75"*
Exterior width 96"
Overall exterior height 112.75"*
Fresh water tank 35 gallons
Grey water tank 35 gallons
Black water tank 35 gallons
Propane 2 seven-gallon tanks
Refrigerator 6 cubic feet –
 three-way power mode
Furnace 20,000 BTUs
Generator Optional
Shower/toilet Dry
Queen cabover + dinette beds
 Standard
Fold-down bunk bed Optional

Extended cabover only

Exterior length 20'2"
Center of gravity 39"
Dry weight 3920 pounds*

Available options

- Interior blue decor palette - Waterfall
- Interior green decor palette - Mineral Wash
- Interior rust decor palette - Copper Canyon
- Interior ebony decor palette - Ponderosa
- Removable carpet kit
- Sofa bed - U-shape
- Extended cabover twin beds
- Water heater - propane/electric/DSI (direct spark ignition)
- Generator
- Solar panel
- Backup camera
- AM/FM/CD/DVD with 15-inch LCD TV and speakers
- Satellite dish with TV antenna
- Air conditioner - Coleman® 13,500-BTU Power Saver with ceiling control
- Awning slideout cover
- Roof rack system
- Storage pod
- Removable thermal sash windows (storm windows)
- Bunk bed with child restraint
- Portable BBQ

Cabover interior headroom heights measured from cabover floor (without mattress) to highest point in cabover ceiling.

Truck bed heights measured from camper's truck bed plate to roof (without air conditioning unit, satellite TV antenna or roof storage system) – including the seven inches for the top of roof ladder.

Overall exterior heights measured from camper's retracted legs to roof (without air conditioning unit, satellite TV antenna or roof storage system) – including the seven inches for the top of roof ladder.

Dry weights based upon standard model features – not including options or dealer-installed items.

Lance 1181



11'6" dry bath camper with dinette, refrigerator and wardrobe on roadside full-wall slideout

Interior floor length 11'6"
Interior height 6'8"
Cabover interior headroom 44.5"*
Truck bed height 101.75"*
Exterior width 96"
Overall exterior height 112.75"*
Fresh water tank 42 gallons
Grey water tank 30 gallons
Black water tank 35 gallons
Propane 2 seven-gallon tanks
Refrigerator 6 cubic feet –
 three-way power mode
Furnace 15,000/22,000 BTUs –
 automatic dual-speed/dual-output
Generator Optional
Shower/toilet Dry
Queen cabover + dinette beds
 Standard
Fold-down bunk bed Optional

Extended cabover only

Exterior length 19'7"
Center of gravity 39"
Dry weight 4028 pounds*

Selected standard features

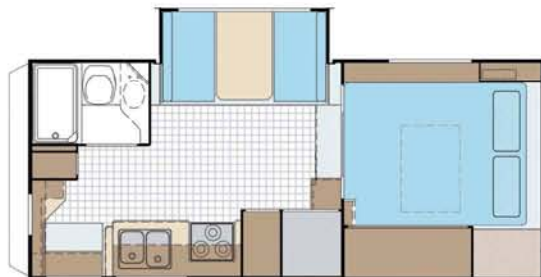
- Air conditioner - Coleman® 13,500-BTU Power Saver with ceiling control
- Side awning
- Swing-out jack brackets
- Awning slideout cover

Available options

- Interior blue decor palette - Waterfall
- Interior green decor palette - Mineral Wash
- Interior rust decor palette - Copper Canyon
- Interior ebony decor palette - Ponderosa
- Removable carpet kit
- Sofa bed - U-shape
- Extended cabover twin beds
- Generator
- Solar panel
- Backup camera
- 15-inch LCD TV with articulating arm
- Satellite dish with TV antenna
- Awning rear door - rollout
- Roof rack system
- Storage pod
- Removable thermal sash windows (storm windows)
- Bunk bed with child restraint
- Portable BBQ

Long bed compatible model

Lance 1191



11'6" dry bath camper with side entry and dinette slideout on roadside

Interior floor length 11'6"
Interior height 6'8"
Cabover interior headroom 44.5"*
Truck bed height 101.75"*
Exterior width 96"
Overall exterior height 112.75"*
Fresh water tank 35 gallons
Grey water tank 35 gallons
Black water tank 35 gallons
Propane 2 seven-gallon tanks
Refrigerator 6 cubic feet -
three-way power mode
Furnace 15,000/22,000 BTUs -
automatic dual-speed/dual-output
Generator Optional
Shower/toilet Dry
Queen cabover + dinette beds
Standard
Fold-down bunk bed Optional

Extended cabover only
Exterior length 19'7"
Center of gravity 45"
Dry weight 3905 pounds*

Selected standard features

- Air conditioner - Coleman® 13,500-BTU
Power Saver with ceiling control
- Side awning
- Swing-out jack brackets
- Awning slideout cover

Available options

- Interior blue decor palette - Waterfall
- Interior green decor palette - Mineral Wash
- Interior rust decor palette - Copper Canyon
- Interior ebony decor palette - Ponderosa
- Removable carpet kit
- Sofa bed - U-shape
- Extended cabover twin beds
- Generator
- Solar panel
- Backup camera
- 15-inch LCD TV with articulating arm
- Satellite dish with TV antenna
- Awning rear door - rollout
- Roof rack system
- Storage pod
- Removable thermal sash windows
(storm windows)
- Bunk bed with child restraint
- Portable BBQ

*
Cabover interior headroom heights measured from cabover floor (without mattress) to highest point in cabover ceiling. **Truck bed heights** measured from camper's truck bed plate to roof (without air conditioning unit, satellite TV antenna or roof storage system) - including the seven inches for the top of roof ladder. **Overall exterior heights** measured from camper's retracted legs to roof (without air conditioning unit, satellite TV antenna or roof storage system) - including the seven inches for the top of roof ladder. **Dry weights** based upon standard model features - not including options or dealer-installed items.



here

**Your favorite spot is out there.
Waiting quietly for you. Waiting
to be discovered and enjoyed.**

**Someday.
There.**

**Come see your Factory
Authorized Lance Dealer this
weekend - and make your
'someday' be today.**

**And while you're planning,
here are some standard features
you'll find common in many
2007 Lance camper models.**

**For a complete listing of
standard features and options
for all Lance models, please
visit your nearest Lance dealer
or LanceCamper.com.**

EXTERIOR

- Trugrit wings
- Aluminum rear bumper
- Foldover step
- Removable pass-through window
- Exterior wash station
- Anodized or white Maggie Rack®
- Anodized or white Phat™ ladder
- Switched patio light
- Side patio lights
- Docking lights
- Radius entry door
- Exterior propane connection
- Egress window in cabover
- TV antenna

INTERIOR + DECOR

- Hardwood-framed flat panel cabinet doors
- Fingertip-positive-catch cabinet hardware
- Lined cabinet door openings
- Cabover access step
- Valances with lambrequins
- Mini-blinds in galley
- Wood magazine and spice racks
- Insulated hatch covers
- Cabover bed carpeted

CONSTRUCTION + INSULATION

- One-piece TPO (thermoplastic polyolefin) roof
- Laminated and insulated floor, lower body, cabover bed and roof
- Block foam insulation throughout
- Aluminum-framed floor, bed and ceiling
- Insulated battery and propane compartments
- Additional cabover bed insulation

ELECTRICAL

- Systems monitor panel
- Manual push/pull battery disconnect
- Incandescent lighting
- Wardrobe light
- Exterior 110-volt AC patio outlet
- Pre-wired for roof air conditioner
- Pre-wired for Fan-Tastic® vent
- Pre-wired for electric jacks
- Pre-wired for TV antenna/satellite dish
- Pre-wired for stereo and speakers
- Pre-wired for solar panel
- Pre-wired for microwave
- Cable TV ready
- Battery separator

DINETTE +**SLEEPING ACCOMODATIONS**

- Comfortable dinette area with reversible cushions
- Queen innerspring mattress
- Deluxe queen innerspring mattress with pillow top
- Bedspread
- Cabover reading lights

GALLEY |**APPLIANCES + EQUIPMENT**

- Range hood with light and fan
- Laminate counter tops and tables with T-molding
- Double sink
- Sink cover
- Silverware organizer
- High-spout galley faucet

BATHROOM

- Dual-pane skylight
- Ducted heat outlet
- Removable clothes rod

The Lance 805 and 815 are exempt from most of these standard features.



1



2



3



4



5



6



12



13



Stowed



Deployed

14



15

Lance provides a limited warranty to the original owner (purchaser) of a new 2007 Lance camper to be free of defects in material or workmanship - and for structural integrity - under normal use with reasonable care and routine prescribed maintenance - for a period of two years from the date of purchase.



25

THE LANCE LIMITED TWO-YEAR WARRANTY



A



21



22



23



24

selected highlights

1 Wraparound U-shaped sofa/bed option 2 Propane outlet 3 Solar panel 4 Battery pullout 5 Propane pullout 6 Rollout drawers 7 Rollout pantry 8 Long-item storage 9 Outside storage 10 Step versatility 11 Twin beds 12 Entertainment package 13 Mirrored wardrobe 14 Bunks 15 Side awning 16 Full-width rear rollout awning 17 Swing-out jack brackets for dual rear-wheeled trucks 18 Short bed modification skirts 19 Pass-through storage and centralized utility bay 20 Marine-grade, seamless TPO roof with Yakima® roof rack and heavy-duty Phat™ ladder 21 Electric jacks with remote control 22 Wet bath 23 Dry bath 24 Shower tub 25 The Lance Warranty



7



8



9



Center position



Towing position

10



11



16



17



18



19



20



B



D

E



F



I



J



K



C



G



H



M



N

Available as after-market add-ons through your Factory Authorized Lance Dealer

A Lance Stor-Mor™ storage pod **B** Lance camper cover **C** Lance camper dolly
D Lance carpet kit **E** Lance Bed-Maid™ sleep system **F** Lance Gourmet Camp Grilles™ –
 23,000-BTU single-burner model and 46,000-BTU double-burner model **G** Lance cargo
 net for models with fold-down storage **H** Lance child restraint system with bunk pads
I Fan-Tastic® exhaust/intake roof vent with rain sensor **J** Satellite dish **K** Onan® Camp
 Power™ propane-powered 2500-watt generator **L** ASA® rear-view observation camera
 with built-in microphone **M** ASA rear-view observation in-cab monitor **N** BBQ grill

selected
accessories

Lance
FACTORY TRAINED
Service

dealer-installed
equipment

Installation of these support equipment systems by your Factory Authorized Lance Dealer is highly recommended to ensure you receive **The Ultimate Ride**. Experience a dramatic improvement in the drivability and handling of your truck and camper package – in any weather, on any road.



ASA's rear-view camera/monitor maximizes safety

2



When not towing loads that require an extended hitch, included in Reese's Titan system is a reducer sleeve, which you use to reconnect the hitch ball and draw bar to the receiver hitch.



1



2



8



Lance-exclusive cabover shocks have quick-release stainless steel connectors

Happijac Qwik-Load™ turnbuckle upgrades make anchoring your camper a snap



4



Within Air Lift's Super Duty air bags are the Lance-exclusive internal jounce bumpers

5

- 1** Reese Titan™ Class V hitch/extension system increases your towing capabilities over a stock factory hitch.
- 2** ASA rear-view camera/microphone and in-cab monitor lets you see – and hear – what's behind you.
- 3** Happijac frame-mount anchoring system and centering guides assist with center alignment within the bed.
- 4** Happijac front and rear turnbuckles safely and securely attach and anchor the camper to your truck.
- 5** Air Lift Super Duty™ air bags increase stability and levels the rig by transferring rear axle load forward.
- 6** Rancho RS-9000X™ front and rear shocks greatly improve ride in all weather and road conditions.
- 7** Air Lift Air-On-Demand™ in-cab control controls the compressor and pressure for the air bags and shocks.
- 8** Lance Custom Design™ cabover shocks reduce the impact of up-and-down motion from irregular roads.

One of the many advantages of choosing a Lance truck camper as your RV is the ability to tow all your toys



When towing behind a Lance camper, extending the hitch from the truck rearward to the camper bumper is necessary.

The method Lance recommends involves a truck-mounted Class V receiver hitch and hitch box extension (as detailed in the 3-D view photos on the dealer-installed equipment section on the opposite page). A draw bar with hitch ball is inserted into the hitch box extension, the same way it would be inserted into the receiver hitch itself.

Reese manufactures the Titan Class V receiver hitch and hitch box extension specifically for truck camper applications. It replaces standard factory-stock receivers, which don't accept hitch box extensions.

The other important benefit is that the Reese Titan Class V system doesn't require you to attach the receiver hitch or hitch box extension to the camper. The hitch box extension can be in place when loading or unloading your camper. For very heavy loads, the hitch box extension in combination with a weight-equalizing hitch can be used. The chart at the right gives capacities for Reese's Titan Class V hitch box extensions.

Always observe your truck's tow ratings – and the advice of your Factory Authorized Lance Dealer. Their service teams have the knowledge, experience and skill to outfit your rig correctly.

Capacities for Reese® Titan™ Class V heavy-duty hitch box extensions

	Weight carrying/ tongue weight	Weight distributing/ tongue weight	Length of cut extension
Lance 845 short bed			24"*
Lance 861 short bed			
Lance 915	6000 pounds/ 600 pounds	8000 pounds/ 800 pounds	
Lance 950			
Lance 981			
Lance 1055			41"*
Lance 1131	5000 pounds/ 500 pounds	7500 pounds/ 750 pounds	
Lance 1181			
Lance 1191			

A universal heavy-duty 48" factory-stock Reese extension is cut down by a technical service professional to a 24" or 41" length to fit your application.

*Dealer modifications required. Consult your Factory Authorized Lance Dealer for professional technical advice and proper equipment installation. All weights, dimensions and capacities are approximate values – and subject to change without notice. All measurements are based on an 8 3/4-inch standard drop ball mount. Some capacities may vary depending on vehicle application. Be safe – always consult with your Factory Authorized Lance Dealer beforehand.



LCMC CERTIFIES 100% COMPLIANCE WITH ALL FEDERAL AND STATE ELECTRICAL, PLUMBING, HEATING AND FIRE SAFETY STANDARDS AS ESTABLISHED FOR RECREATIONAL VEHICLES AS A MEMBER IN GOOD STANDING WITH RVIA (RECREATION VEHICLE INDUSTRY ASSOCIATION).

LANCE PROUDLY ENDORSES





FACTORY AUTHORIZED DEALERS ACROSS THE USA + CANADA



ABLE + READY TO SERVE YOU

Lance 805

Fits imports like Toyota[®] Tundra[™] and Nissan[®] Titan[™] – and domestic F-150s and 1500s. Photos on pages 18-19. Specs on page 20.



Lance 1131

Lance's most spacious camper – sleeps seven – with slideout and rear tent. Photos on pages 6-7. Basic tech specs on page 25.



the new Lance

sports camper

a truck camper RV
designed for the serious
outdoor enthusiast



Lance

SportsCamper

If you own a truck, you're halfway to owning an RV

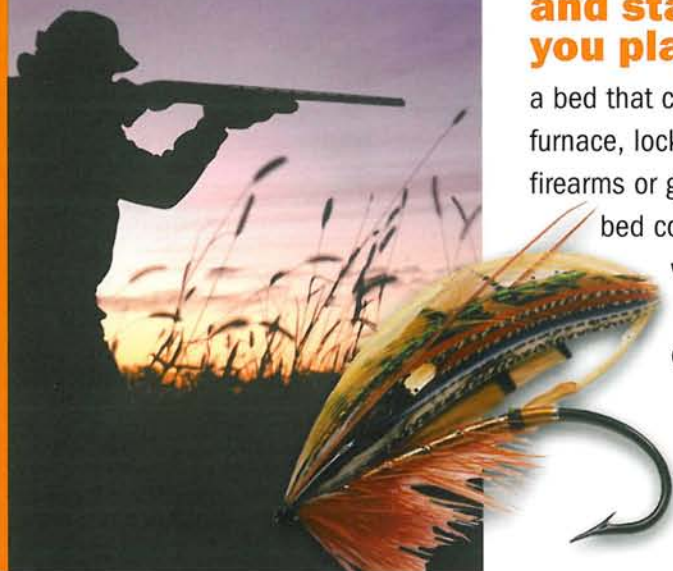
Since 1965, Lance has been the #1 truck camper manufacturer in North America – and now there's a new series of campers designed exclusively for people who enjoy serious outdoor adventures like hunting, fishing and practically any outdoor sport: the Lance SportsCamper. No more motels or restaurants...just stay where you play.

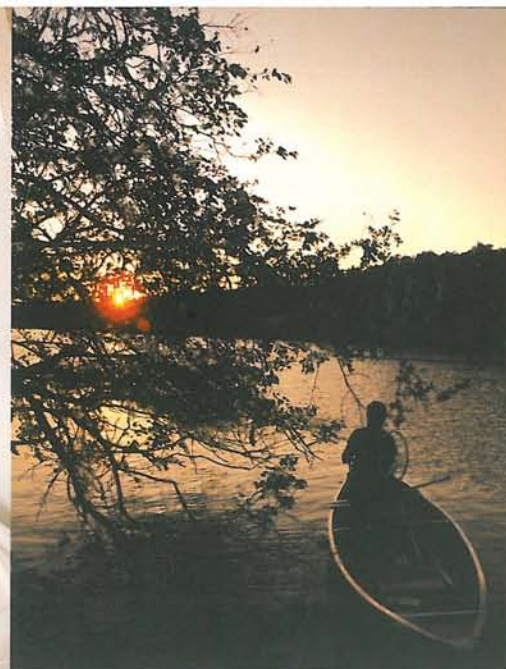
The Lance SportsCamper, fully self-contained, turns your full-sized pickup into the most versatile RV on the planet. Go anywhere, do anything, anytime – with the ability to tow all your toys while enjoying a maneuverability no other RV can match! And all Lance campers are easy to load and unload.



Everything you need to get out and stay where you play

Each model features a roomy interior complete with all the conveniences and comforts you'd expect from a top-quality RV, but with extras specially made for outdoorspeople in the field – a bed that converts between super queen and twin sizes, high-BTU forced-air furnace, lockable storage for firearms or gear, outdoor-patterned bed covers, and an oversized wardrobe for bulky clothes. And special options, too.





Lance 8SCS

8'6" short bed sports camper

Interior floor length 8'6"

Interior height 6'8"

Cabover interior headroom 34"*

Truck bed height 90 1/2"**

Exterior width 93"

Overall exterior height 102 1/2"†

Fresh water tank 30 gallons

Grey water tank 13 gallons

Black water tank 19 gallons

Propane 2 five-gallon tanks

Refrigerator 4 cubic feet - three-way power mode

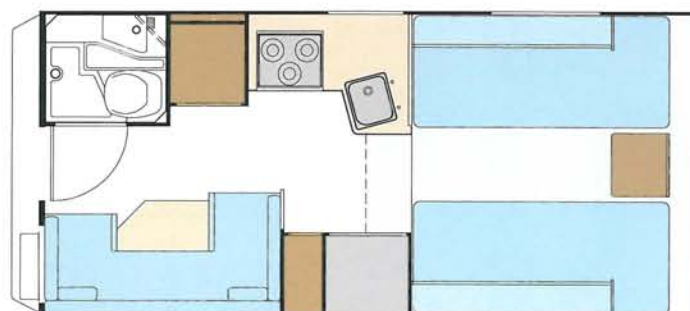
Furnace 18,000-BTU auto-ignite furnace with thermostat

Extended cabover only

Exterior length 16'5"

Center of gravity 47"

Dry weight 2,378 pounds†



Lance 9SC

9'6" sports camper

Interior floor length 9'6"

Interior height 6'10"

Cabover interior headroom 36"*

Truck bed height 92 1/2"**

Exterior width 93"

Overall exterior height 104 1/2"†

Fresh water tank 30 gallons

Grey water tank 13 gallons

Black water tank 19 gallons

Propane 2 five-gallon tanks

Refrigerator 5 cubic feet - three-way power mode

Furnace 20,000-BTU auto-ignite furnace with thermostat

Battery Dual battery compartment

Extended cabover only

Exterior length 17'6"

Center of gravity 58"

Dry weight 2,452 pounds†

* Headroom measured as height from cabover floor (without mattress) to highest point in cabover ceiling.

** Height measured from camper's truck bed plate to roof (without air conditioning unit, satellite TV antenna or roof storage system) - including the 7 inches for the top of roof ladder.

† Height measured from camper's retracted legs to roof (without air conditioning unit, satellite TV antenna or roof storage system) - including the 7 inches for the top of roof ladder.

† Dry weight based upon standard model features and doesn't include options, equipment packages or dealer-installed items.



the Lance sports camper™

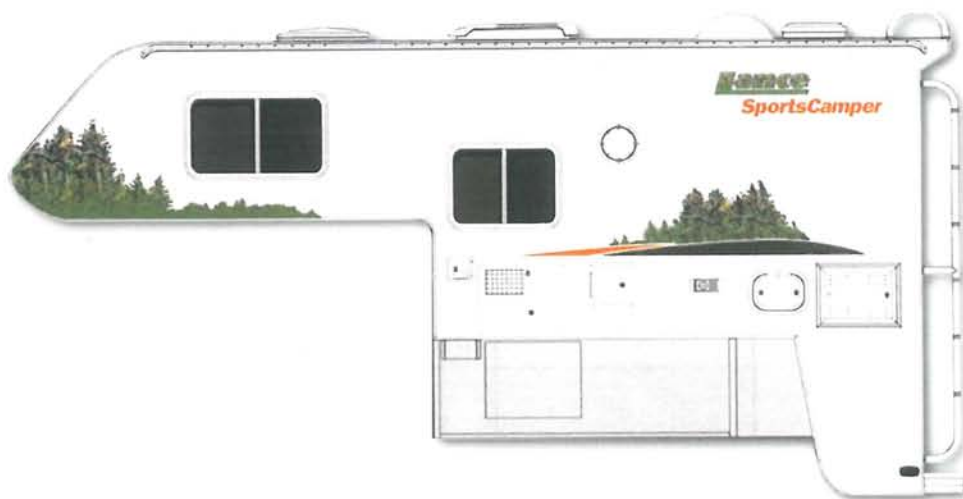
Standard Features

- Filon® Polar White fiberglass exterior
- Super Queen-sized bed that converts to two twin beds in cabover
- Dinette/bed
- Three-burner range
- Six-gallon auto-relight hot water heater
- Dual five-gallon propane tanks with gauges
- Complete bathroom
- Durable vinyl upholstery
- Exterior wash station/outside shower
- Heavy-duty roof rack and ladder
- Exterior utility lights
- Systems monitor panel
- 110V AC/12V DC/45-amp power converter with battery charger
- Holding tank cover
- Battery separator
- Battery disconnect switch
- Insulated vent and skylight covers
- Heated holding tank compartment
- Water heater bypass and winterizing kit
- Insulated battery/propane compartments
- Extra bed insulation

Options

- Gas oven with three-burner range
- Microwave oven
- Onan® 2500W/110V AC generator
- Generator-ready
- 80W/12V solar panel
- Electric jacks with wireless remote
- Swing-out brackets (for dually trucks)
- AM/FM/CD stereo with four speakers
- TV antenna with 12V amplified outlet
- Fan-Tastic® roof vent
- Air conditioning with ceiling controls
- Rear door awning
- Rollout side awning
- Roof rack system
- Storage pod (30-cubic-foot capacity)
- Portable exterior sink
- Portable BBQ
- Carpet kit
- Removable thermal windows

To locate your nearest Lance dealer or request a price quote, visit www.lancecamper.com or call 1 888 274 2267 to receive your complimentary Lance brochure.



Lance
Recreational Versatility™



100%
MADE-IN-USA
QUALITY



8TH-YEAR WINNER
RVDA QUALITY CIRCLE AWARD
FOR PRODUCT EXCELLENCE